



Kachemak Bay Watercolor Society presents

Sharon Towle AWS, NWS

WATERCOLOR WORKSHOP a dance with color

Thursday, Sept. 16 through Sunday, Sept. 19, 2010

Location: *Land's End Resort and Quarterdeck
Kachemak Bay, Homer, Alaska*

Cost: \$250

Class size: limit 20 students

10% discount for KBWS members

SCHOLARSHIPS AVAILABLE

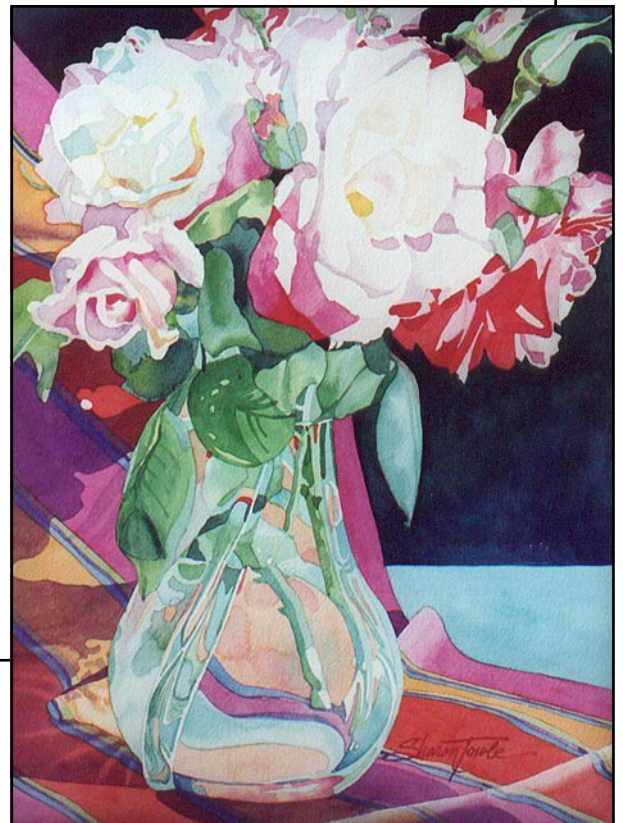


"Sharon Towle's sun-drenched watercolor still lifes reveal a deep faith in the power of color to enliven—and electrify—her subjects.

Every so often, color calls to Sharon Towle and she can't resist answering by running a hot pink or bright orange edge down a leaf. "If you were to look very closely at some of my paintings," she says, "you'd find that there's a great deal of color—tiny flecks where you wouldn't expect to find them." It doesn't happen with every painting and Towle doesn't drop in color accents haphazardly; rather, it's about listening to the painting's needs, following her instincts—and enjoying herself".

from "Watercolor Artist" magazine, Fall 2008

*see more of Sharon Towle's work at
www.sharontowle.com*





Color invigorates the painting process as well as the paintings themselves. Often, Sharon's choice of subject matter is driven by her interest in a very specific, limited palette. Colors become the basic unifying theme of the painting, but that doesn't mean they're the only colors that appear. "There are pinks, peaches, lavender and turquoise in the flowers, but they're still white flowers," A blue glass is not just blue, it is filled with color. "I think as artists we learn to see more... more color and more structure.

The challenge is to produce variation within a color scheme while retaining continuity. The most interesting areas are often the most complicated.

Sharon is a Signature Member of Watercolor West and Women Painters West, and an Associate Member of the National and American Watercolor Societies and International Society of Marine Painters. Recent publications include the Fall 2008 issue of Watercolor Artist magazine, and Splash 8 and 10.

SHARON TOWLE WORKSHOP SCHEDULE

SEPT. 16 through SEPT. 19, 2010

Thurs. 7 - 9 PM Bring a sample of your most recent work and meet Sharon Towle

Fri. - Sat. 9 AM - 4 PM Workshop with one hour lunch break

Sun. 9 Am - 3 PM Workshop with one hour lunch break

Land's End Resort and Quarterdeck

4786 Homer Spit Road, Homer

Land's End Resort is located at the end of the Homer Spit with access to the beaches and landscapes that characterize Kachemak Bay. Land's End is offering both winter rates for regular and condo rooms, plus a 10% discount. Please mention Kachemak Bay Watercolor Society upon booking...the local number is 907-235-0400. <http://www.lands-end-resort.com> 1-800-478-0400

Please send registration fee of \$100 non-refundable deposit (unless class fills) to:

Bev Macy, WORKSHOPS, KBWS, P.O.Box 98, Homer, Alaska 99603.

Participants will be accepted in order in which deposit checks are received. If workshop is filled, deposit will keep the applicant on waiting list, to be refunded in the event a space does not become available.

A confirmation will be sent upon receipt of the deposit. For additional information contact:

Bev Macy 907-235-9365 or 907-299-6229 CEL bdmacy1@juno.com

SHARON TOWLE WORKSHOP

Thursday Sept. 16 through Sunday, Sept. 19, 2010

Name _____

Address _____

City _____ State _____ Zip Code _____

Phone _____ Amount Enclosed _____

Fireweed Gallery

on the corner, 475 E. Pioneer Ave.

Homer, Alaska. Hours open:

10-7pm Mon-Sat, 11-5pm Sun

Winter 10:30-5:30 Mon-Sat

907-235-3411

art@fireweedgallery.com

